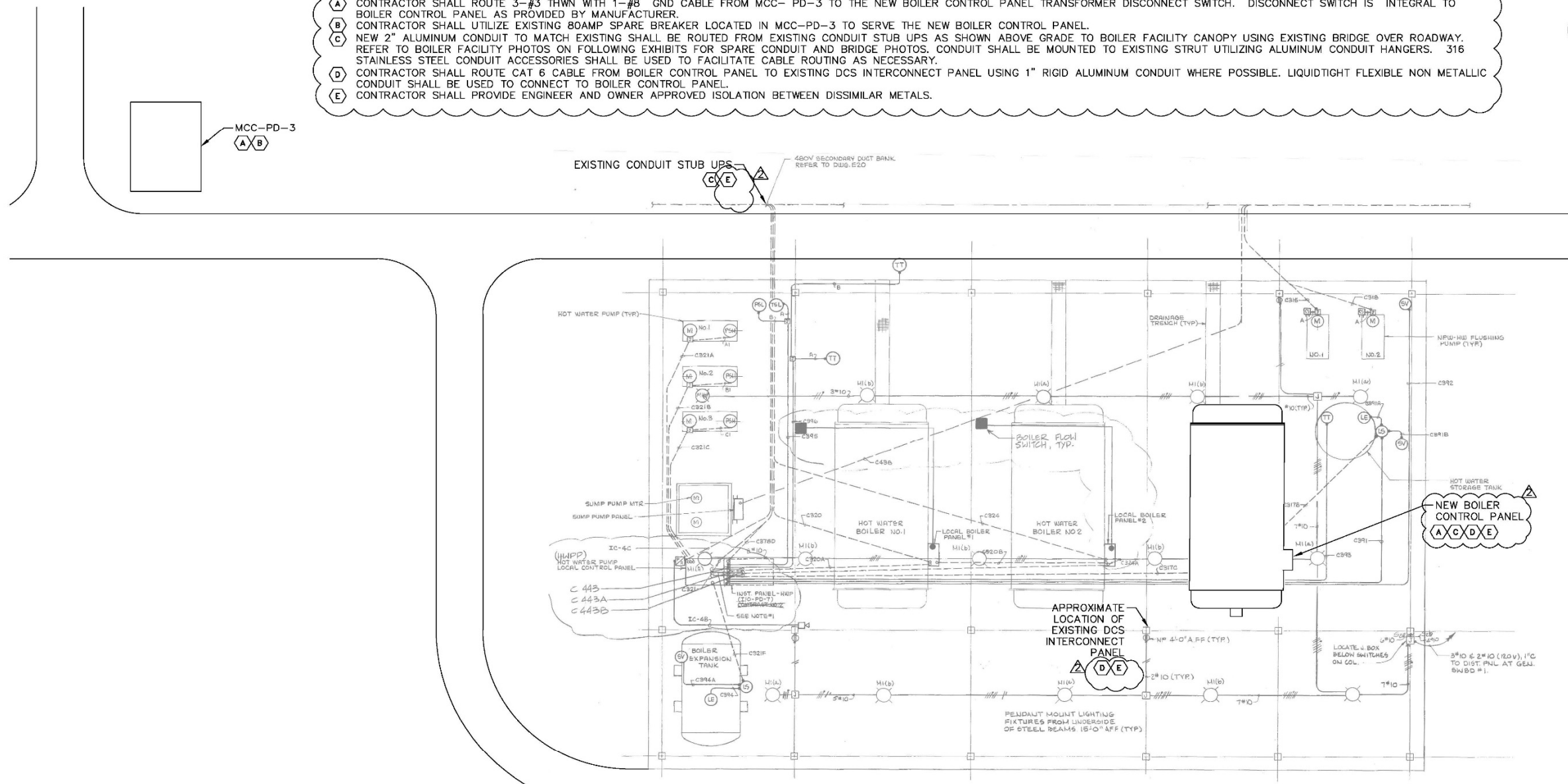


KEYED NOTES:

- A** CONTRACTOR SHALL ROUTE 3-#3 THWN WITH 1-#8 GND CABLE FROM MCC-PD-3 TO THE NEW BOILER CONTROL PANEL TRANSFORMER DISCONNECT SWITCH. DISCONNECT SWITCH IS INTEGRAL TO BOILER CONTROL PANEL AS PROVIDED BY MANUFACTURER.
- B** CONTRACTOR SHALL UTILIZE EXISTING 80AMP SPARE BREAKER LOCATED IN MCC-PD-3 TO SERVE THE NEW BOILER CONTROL PANEL.
- C** NEW 2" ALUMINUM CONDUIT TO MATCH EXISTING SHALL BE ROUTED FROM EXISTING CONDUIT STUB UPS AS SHOWN ABOVE GRADE TO BOILER FACILITY CANOPY USING EXISTING BRIDGE OVER ROADWAY. REFER TO BOILER FACILITY PHOTOS ON FOLLOWING EXHIBITS FOR SPARE CONDUIT AND BRIDGE PHOTOS. CONDUIT SHALL BE MOUNTED TO EXISTING STRUT UTILIZING ALUMINUM CONDUIT HANGERS. 316 STAINLESS STEEL CONDUIT ACCESSORIES SHALL BE USED TO FACILITATE CABLE ROUTING AS NECESSARY.
- D** CONTRACTOR SHALL ROUTE CAT 6 CABLE FROM BOILER CONTROL PANEL TO EXISTING DCS INTERCONNECT PANEL USING 1" RIGID ALUMINUM CONDUIT WHERE POSSIBLE. LIQUIDTIGHT FLEXIBLE NON METALLIC CONDUIT SHALL BE USED TO CONNECT TO BOILER CONTROL PANEL.
- E** CONTRACTOR SHALL PROVIDE ENGINEER AND OWNER APPROVED ISOLATION BETWEEN DISSIMILAR METALS.



**BOILER ELECTRICAL PLAN VIEW**  
SCALE: N.T.S.

5/26/2017 R:\SHERVEY\SAWS DOS RIOS BOILER IMPROVEMENTS PROJECT\PROCUREMENT PLANS\ADDENDUMS-BOILER SITE ELEC.DWG

**S&GE**  
Civil Engineers  
8400 Blanco Road, Ste. 201, San Antonio, Texas 78216  
Office (210) 493-8200 Fax (210) 493-8205  
TBPE Firm No. F-8038

ADDENDUM #2  
SAN ANTONIO WATER SYSTEM  
DOS RIOS BOILER FACILITY  
**BOILER FACILITY ELECTRICAL  
PLAN VIEW**  
DATE: 5/26/2017 3 OF 5